



MAESTRO

PROFESSIONAL THUMB REST FOR
CLARINET

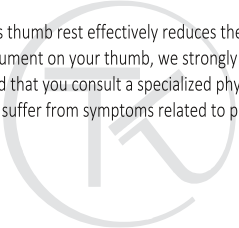


MAESTRO

IMPORTANT

To fully enjoy the MAESTRO Thumb Rest please read this manual carefully. It is as important to take ample time to get used to the new position of your thumb.

Though this thumb rest effectively reduces the pressure of the instrument on your thumb, we strongly recommend that you consult a specialized physician should you suffer from symptoms related to playing.



MAESTRO

Making music can be very relaxing – but it is also demanding, especially when performing at a high level. If you want to play comfortably and relaxed, and if you want to prevent long and short term physical problems, it is essential that you use an ergonomically adapted instrument. The MAESTRO Thumb Rest and other Kooiman products help you to easily realize this adaptation.

Using a traditional thumb rest, the instrument rests at the very end of the thumb. This places a heavy load on the thumb. The Kooiman MAESTRO Thumb Rest has the instrument resting between the two parts of the thumb. The illustrations alongside clearly show the difference. The MAESTRO strongly reduces the required muscle power. As the hand can be much more relaxed, the fingers gain additional freedom of movement. The third and fourth fingers can reach the lower part of the

MAESTRO

mechanism more easily. Compared to a traditional thumb rest, the MAESTRO Thumb Rest is located higher up the instrument. As a result, the thumb regains its natural position rather than being pushed downward. The lightly curved thumb makes sure the instrument is actively supported by the player. This may require some getting used to. Please note that the thumb should always be in full contact with the thumb rest case.



Traditional thumb rest



*Kooiman MAESTRO
thumb rest*

MAESTRO

ASSEMBLY

To prevent damaging your instrument, it's best to have the Kooiman MAESTRO Thumb Rest assembled by your technician. Should you want to do it yourself, please carefully follow this manual:

- Remove the current thumb rest.
- Push the mounting plate (1) up to remove it from the case (2). Place the mounting plate against the body of the instrument across from the position of your first finger. The curved side of the plate should be against the body, its two holes (in horizontal position) facing up, and the plate itself parallel to the longitudinal axis of the instrument. The plate should be 24mm (0.945") below the top end of the bottom section of the clarinet.
- Use a 1.7 mm bit to drill a hole in the wall of the instrument, using one of the holes in the mounting plate as a guide. (Do not pierce the wall! Leave the

MAESTRO

drilling to your technician if you're not sure you can manage this without damaging the instrument).

- Fasten the first screw. Repeat this for the other holes, one by one.
- Slide the case over the plate from the bottom up.

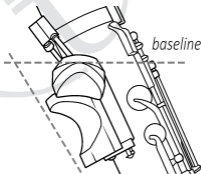
ADJUSTMENT

- Adjusting the MAESTRO Thumb Rest is easiest in cooperation with your technician.
- To properly adjust the thumb rest, you should be able to fully relax your right hand: It should not support the instrument. For that purpose you should sit relaxed on a straightbacked chair. Hold the horn in its playing position, the mouthpiece in your mouth, the bell resting on your knees. You can use your left hand to help balance the instrument.
- Now place your right hand on the keys, your thumb in the hollow of the case. The screws (A1 and A2, B1

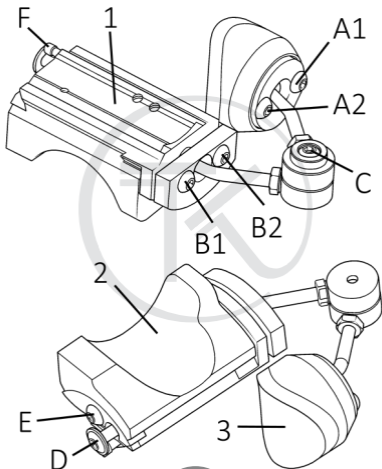
MAESTRO

and B2, C) should be loosened just a bit; the padded thumb rest (3) moved aside.

- Check the height adjustment: Can you easily reach all keys? Adjust the height using Allenhead screws D and F. (Use the large Allen-head key for screw D; the small one for screw F.)
- The position of the case can be adjusted to optimally support the thumb and prevent it from sagging. Loosen screw E and move the case to its desired position. Now fix the case with the large Allen-head key.



MAESTRO



MAESTRO

- Place the padded thumb rest between the two thumb joints. The padded section should be parallel to the floor (see illustration). Lightly tighten screws A1 and A2, followed by C, and finally B1 and B2.



MAESTRO

ADDITIONAL INFORMATION

For additional information please visit our website at www.tonkooiman.com or send us an e-mail at info@tonkooiman.com.

KOOIMAN THUMB RESTS

Other Ton Kooiman Thumb Rests are the OBOE for oboe, the ETUDE 2 for clarinet and oboe, the OEHLER for the German Oehler-clarinet with additional E/F key, the FORZA for saxophone, and the PRIMA for flute.

PRODUCTION AND EXPORT

Ton Kooiman Thumb Rests are made and exported by Rokatec BV, Landzigt 36, 3454 PE De Meern, The Netherlands, phone +31 30 6666 868, www.rokatec.com, info@rokatec.com.

